

This figure presents a detailed engineering drawing of a shell nozzle assembly, specifically for a filter press area clean water tank. The main view shows a vertical section of the vessel with various components labeled, including nozzles, elbows, flanges, gaskets, and reinforcement pads. Dimensions are provided in millimeters (mm) unless otherwise specified.

Key Components and Dimensions:

- Nozzle Assembly:** Includes a nozzle neck (6" SCH.40), elbow (90° L.R., 6" SCH.40), and flange (ASME #150 S.O.R.F.).
- Gasket Material:** Spiral wound (14.5) with flexible graphite filler, inner ring C.S., and outer ring C.S.
- Reinforcement Pads:** ASTM A36 or EQ, 100x50x7.5 mm.
- Support Channel:** ASTM A36 or EQ, 100x50x7.5 mm.
- Joint Channel:** Detail showing the connection between the nozzle neck and the support channel.
- U-Bolt:** Detail showing the U-bolt used for clamping the joint.
- Detail of Nozzle:** Shows the nozzle neck and flange details.

Notes:

- ALL DIMENSIONS ARE IN MM UNLESS OTHERWISE SPECIFIED.
- GASKET MATERIAL :
 - A). NOZZLE GASKET : SPIRAL WOUND (14.5)
 - FILLER : FLEXIBLE GRAPHITE -INNER RING : C.S.
 - HOOP : 316 SS -OUTER RING : C.S.
- THE PAINTING/COATING SYSTEM SHALL BE IN ACCORDANCE WITH PROJECT SPECIFICATION ADIP-3655-2100-018-SFP-0003-2. ALL SURFACE PREPARATION, COATING MATERIALS, APPLICATION METHODS, AND INSPECTION REQUIREMENTS SHALL STRICTLY COMPLY WITH THIS SPECIFICATION.
- ALL WELDED JOINTS SHALL BE SUBJECTED TO NON-DSTRUCTIVE TESTING (NDT) IN ACCORDANCE WITH APPLICABLE CODES AND STANDARDS

Document / Drawing Review Status:

REV	DATE	DESCRIPTION	DRN	CKD	DESIGN ENG	HER	DS	HK	MS	PROJ APP	CLIENT APPD
B	04/05/26	ISSUED FOR APPROVAL	INK	HER	DS	HK	MS	-	-	-	-
A	12/03/26	ISSUED FOR APPROVAL	INK	HER	DS	HK	MS	-	-	-	-

Table 1: PART CODE

ITEM NO.	NAME OF PART	MATERIAL	QTY	CONST & COMM.	OPER.	UNIT	REMARKS
-14	STUD BOLT/2NUTS	ASTM A36	8			3/4" UNCx100L	
-13	REINF. PAD	ASTM A36	1			t6	
-12	U-BOLT/2NUTS	A36	3			M16 (6")	
-11b	REINF. PAD	ASTM A36	1			t8	
-11a	REINF. PAD	ASTM A36	2			t6	
-10	SUPPORT CHANNEL	ASTM A36 OR EQ.	3			[100x50x7.5	
-9	SUPPORT CHANNEL	ASTM A36 OR EQ.	3			[100x50x7.5	
-8	NOZZLE NECK	ASTM A106 Gr.B	1			6" SCH.40	
-7	NOZZLE NECK	ASTM A106 Gr.B	1			6" SCH.40	
-6	ELBOW 90° L.R	ASTM A234 Gr.WPB	1			6" SCH.40	
-5	NOZZLE NECK	ASTM A106 Gr.B	1			6" SCH.40	
-4	FLANGE	ASTM A105	1			6" ASME #150 S.O.R.F	
-3	GASKET	NOTE 2	1			14.5 ASME #150 R.F	
-2	NOZZLE NECK	ASTM A106 Gr.B	1			6" SCH.80	
-1	FLANGE	ASTM A105	1			6" ASME #150 S.O.R.F	

(1) SET TO BE MANUFACTURED

COMO ENGINEERS
L2, 38 RICHARDSON ST WEST PERTH,
WESTERN AUSTRALIA 6005
+61 8 9432 0100
www.comoeng.com.au

CPM PT Citra Palu Minerals

PT.HANAZONO ENGINEERING INDONESIA

DETAIL OF NOZZLE

DETAIL "A"

DETAIL "B"

DETAIL U-BOLT

DETAIL JOINT CHANNEL

"PLEASE CONFIRM"

NOTES :

- ALL DIMENSIONS ARE IN MM UNLESS OTHERWISE SPECIFIED.
- GASKET MATERIAL :
 - A). NOZZLE GASKET : SPIRAL WOUND (14.5)
 - FILLER : FLEXIBLE GRAPHITE -INNER RING : C.S.
 - HOOP : 316 SS -OUTER RING : C.S.
- THE PAINTING/COATING SYSTEM SHALL BE IN ACCORDANCE WITH PROJECT SPECIFICATION ADIP-3655-2100-018-SFP-0003-2. ALL SURFACE PREPARATION, COATING MATERIALS, APPLICATION METHODS, AND INSPECTION REQUIREMENTS SHALL STRICTLY COMPLY WITH THIS SPECIFICATION.
- ALL WELDED JOINTS SHALL BE SUBJECTED TO NON-DSTRUCTIVE TESTING (NDT) IN ACCORDANCE WITH APPLICABLE CODES AND STANDARDS

Document / Drawing Review Status

REV	DATE	DESCRIPTION	DRN	CKD	DESIGN ENG	HER	DS	HK	MS	PROJ APP	CLIENT APPD
B	04/05/26	ISSUED FOR APPROVAL	INK	HER	DS	HK	MS	-	-	-	-
A	12/03/26	ISSUED FOR APPROVAL	INK	HER	DS	HK	MS	-	-	-	-

Table 1: PART CODE

ITEM NO.	NAME OF PART	MATERIAL	QTY	CONST & COMM.	OPER.	UNIT	REMARKS
-14	STUD BOLT/2NUTS	ASTM A36	8			3/4" UNCx100L	
-13	REINF. PAD	ASTM A36	1			t6	
-12	U-BOLT/2NUTS	A36	3			M16 (6")	
-11b	REINF. PAD	ASTM A36	1			t8	
-11a	REINF. PAD	ASTM A36	2			t6	
-10	SUPPORT CHANNEL	ASTM A36 OR EQ.	3			[100x50x7.5	
-9	SUPPORT CHANNEL	ASTM A36 OR EQ.	3			[100x50x7.5	
-8	NOZZLE NECK	ASTM A106 Gr.B	1			6" SCH.40	
-7	NOZZLE NECK	ASTM A106 Gr.B	1			6" SCH.40	
-6	ELBOW 90° L.R	ASTM A234 Gr.WPB	1			6" SCH.40	
-5	NOZZLE NECK	ASTM A106 Gr.B	1			6" SCH.40	
-4	FLANGE	ASTM A105	1			6" ASME #150 S.O.R.F	
-3	GASKET	NOTE 2	1			14.5 ASME #150 R.F	
-2	NOZZLE NECK	ASTM A106 Gr.B	1			6" SCH.80	
-1	FLANGE	ASTM A105	1			6" ASME #150 S.O.R.F	

(1) SET TO BE MANUFACTURED

COMO ENGINEERS
L2, 38 RICHARDSON ST WEST PERTH,
WESTERN AUSTRALIA 6005
+61 8 9432 0100
www.comoeng.com.au

CPM PT Citra Palu Minerals

PT.HANAZONO ENGINEERING INDONESIA

DETAIL OF NOZZLE

DETAIL "A"

DETAIL "B"

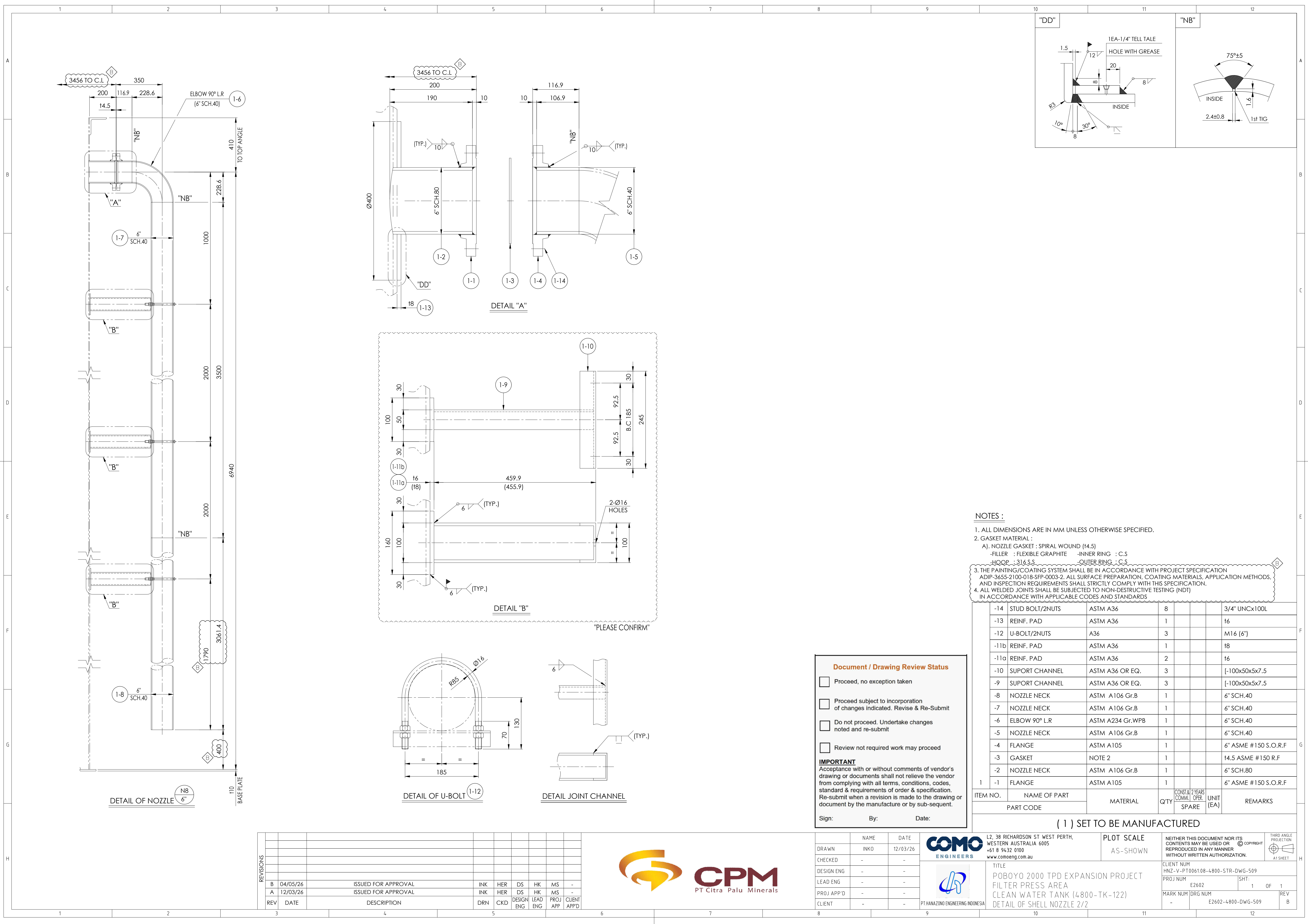
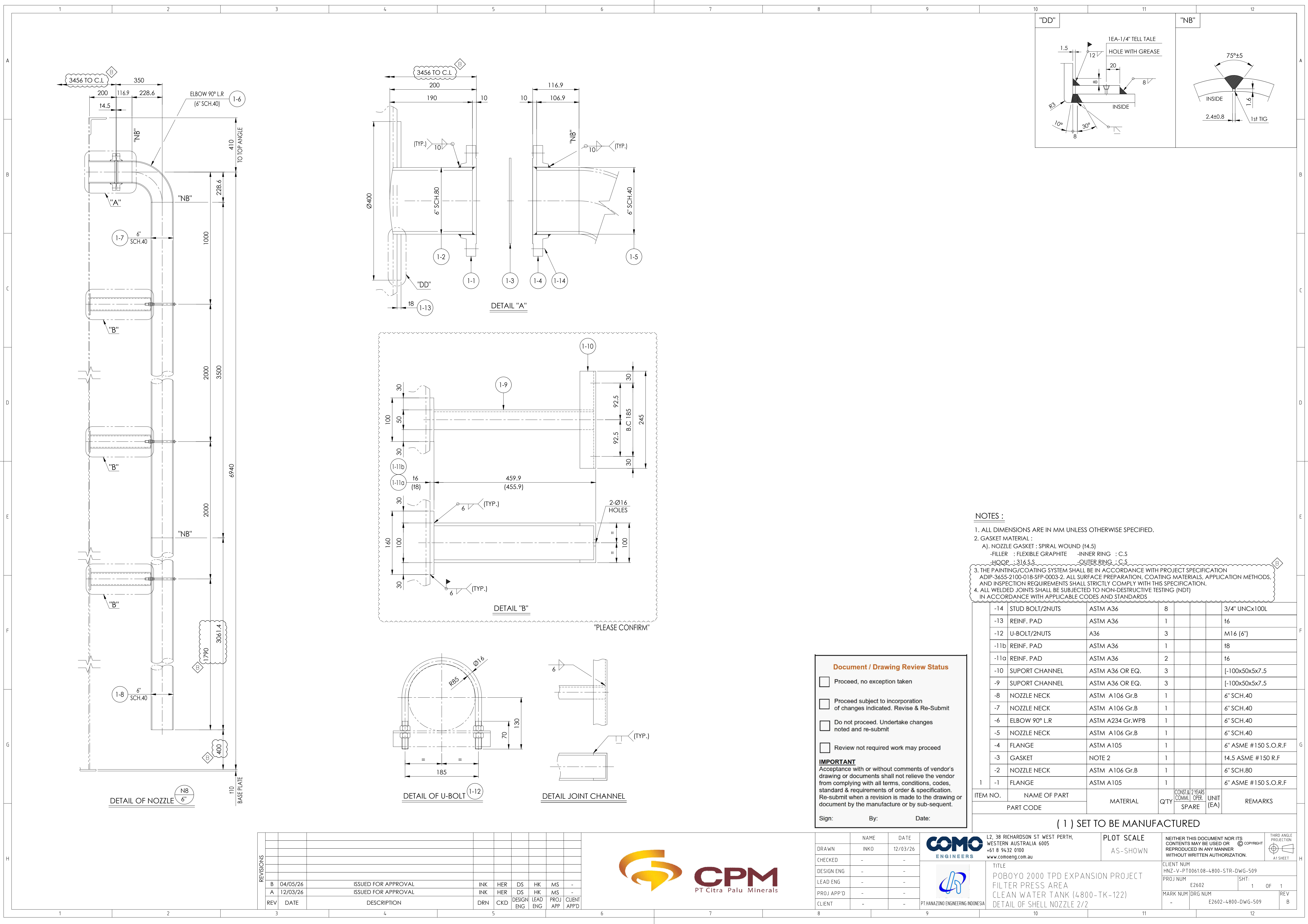
DETAIL U-BOLT

DETAIL JOINT CHANNEL

"PLEASE CONFIRM"

NOTES :

- ALL DIMENSIONS ARE IN MM UNLESS OTHERWISE SPECIFIED.
- GASKET MATERIAL :
 - A). NOZZLE GASKET : SPIRAL WOUND (14.5)
 - FILLER : FLEXIBLE GRAPHITE -INNER RING : C.S.
 - HOOP : 316 SS -OUTER RING : C.S.
- THE PAINTING/COATING SYSTEM SHALL BE IN ACCORDANCE WITH PROJECT SPECIFICATION ADIP-3655-2100-018-SFP-0003-2. ALL SURFACE PREPARATION, COATING MATERIALS, APPLICATION METHODS, AND INSPECTION REQUIREMENTS SHALL STRICTLY COMPLY WITH THIS SPECIFICATION.
- ALL WELDED JOINTS SHALL BE SUBJECTED TO NON-DSTRUCTIVE TESTING (NDT) IN ACCORDANCE WITH APPLICABLE CODES AND STANDARDS

[illegible][illegible][illegible][illegible][illegible][illegible][illegible]